



ELECTRONIC ALFA OVENS PROGRAMMING APP

INDEX

1. WHAT IS THE APPLICATION	pag. 1
2. REGISTRATION	pag. 2
3. HOME PAGE	pag. 3
4. OVEN SELECTION	pag. 6
5. PROGRAMS' BOOK	pag. 8
6. TOOLS	pag. 14
PC to Oven program transfer	pag. 14
Oven to PC program transfer	pag. 17
HACCP data download	pag. 21

1

WHAT IS THE APPLICATION?

The input and editing of programs can be done in two different ways:

- directly from oven's control panel
- input and editing on a computer using this application, making the task easier for the user

This app for electronic ALFA ovens simplifies programs input and editing. These two operations can be executed on a pc and then uploaded onto the oven using an usb pen.

The programs can be set up on a pc and then transferred to the oven by using an usb pen.



2

REGISTRATION

- The user must go to page https://www.smegfoodservice.com/electronic_oven_smeg/ and click on "Registration"
- Once all fields are completed and data are submitted, the user will receive an e-mail from **@Root user** with the instructions to complete registration and activate the user profile
- After profile activation, the user can log in and use all application functions

Login

* Campi obbligatori

UserName

Password

Login

[Hai dimenticato la password?](#)
[Registrazione](#)

smeg
FOODSERVICE

Register English

* Required fields

Your Full Name*: Email Address*:

UserName*: Password*:

Company*:

Oven model*:
AI FA420FHDS/AI FA420FHT/AI FA625FHDS/AI FA625FHT/AI FA1035F

I have read the [privacy policy](#)*

I agree to receive marketing and promotional information by e-mail, SMS or telephone as indicated in our [privacy policy](#)*

Submit

[Login](#)


smeg
FOODSERVICE



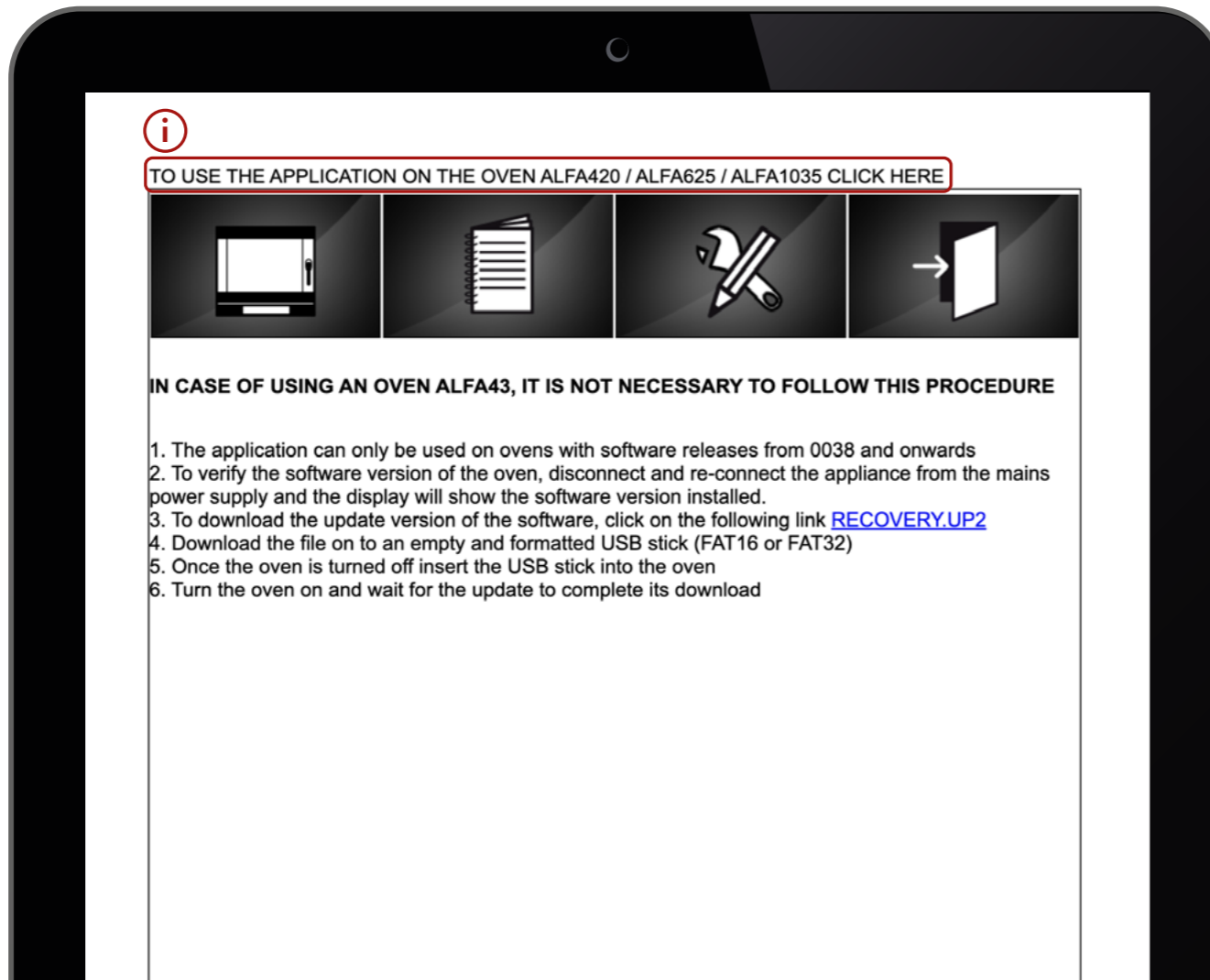
N.B.
To download the recipes the USB format must be FAT32, FAT16 or FAT12. Different USB formats are not considered compatible with the oven.

3

HOME PAGE

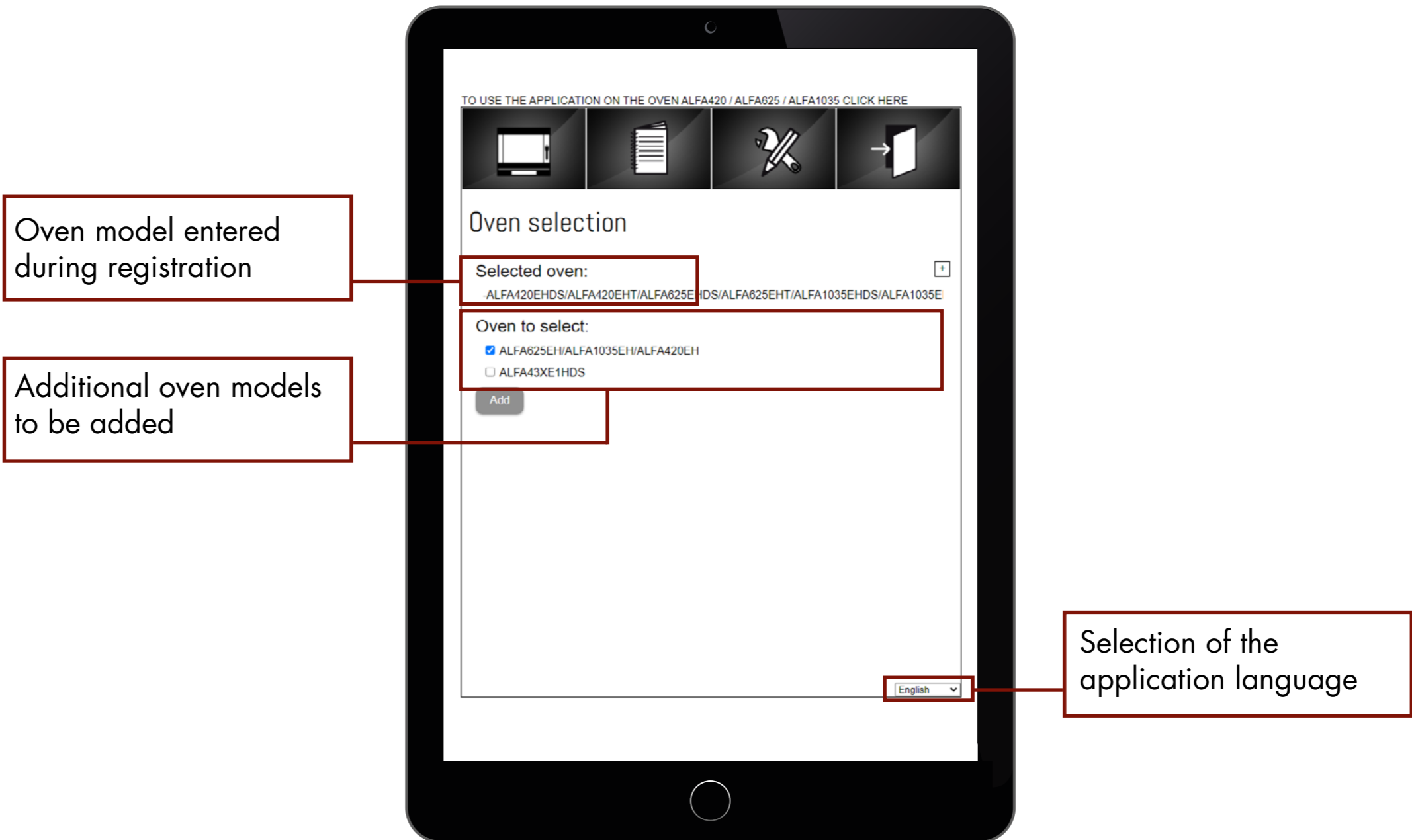
 Please, check the oven firmware release number for models ALFA420/625/1035 and follow the procedure by clicking on "Click Here".

- In order to be able to update the firmware release, please make sure that the recovery file name is exactly «**RECOVERY.UP2**» with no additional characters



3 HOME PAGE

The Home Page is designed as follows:



3

HOME PAGE

The Home Page is designed as follows:

1. Oven selection:

Allows the user to select his oven's type

2. Program book:

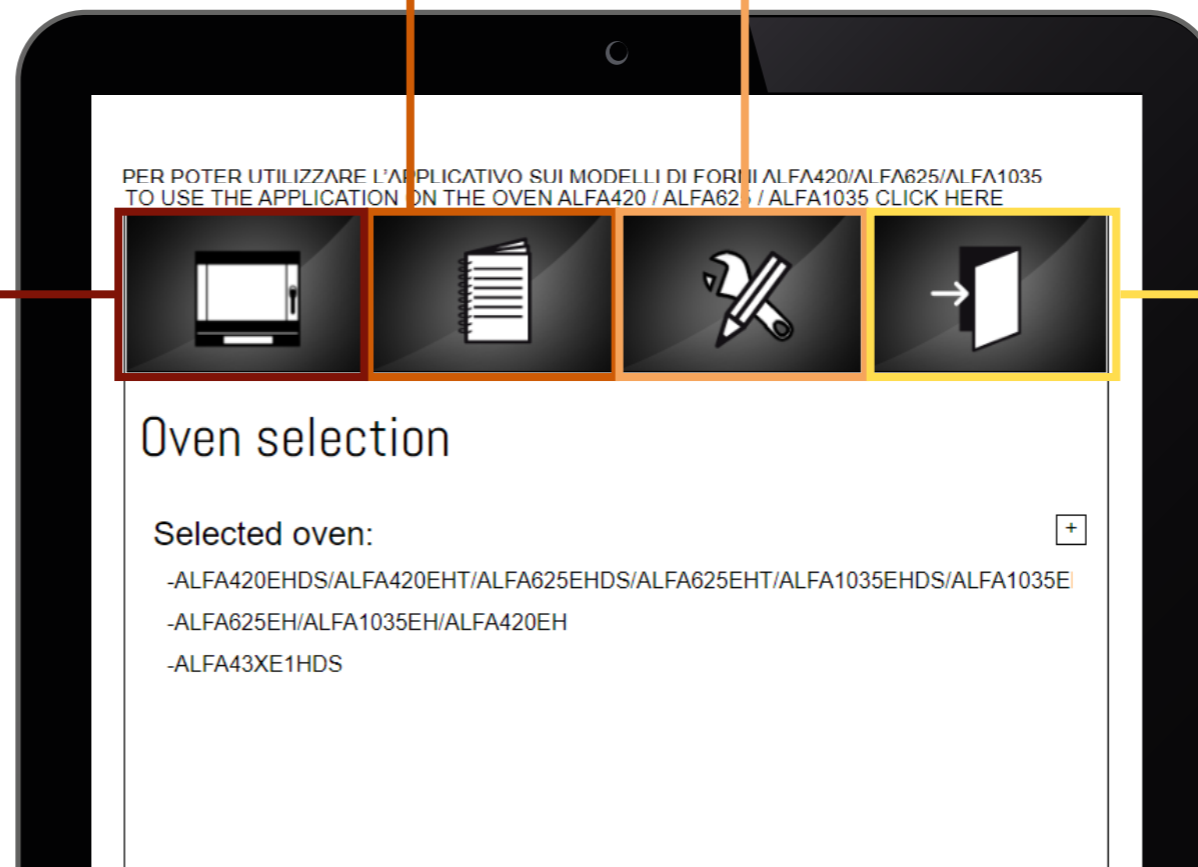
Allows entering new programs and editing existing ones. Programs can be saved on an usb pen and then uploaded onto the oven

3. Tools:

- Allows transferring data to and from usb
- Allows use of HACCP functions, creating a graph with the data downloaded from oven.

2. Log-out:

Allows log out from the application



4 OVEN SELECTION

How to assign a name to an oven:



Click on the Oven Selection icon.

Click on «+» to give a name to the oven on which programs will be uploaded .

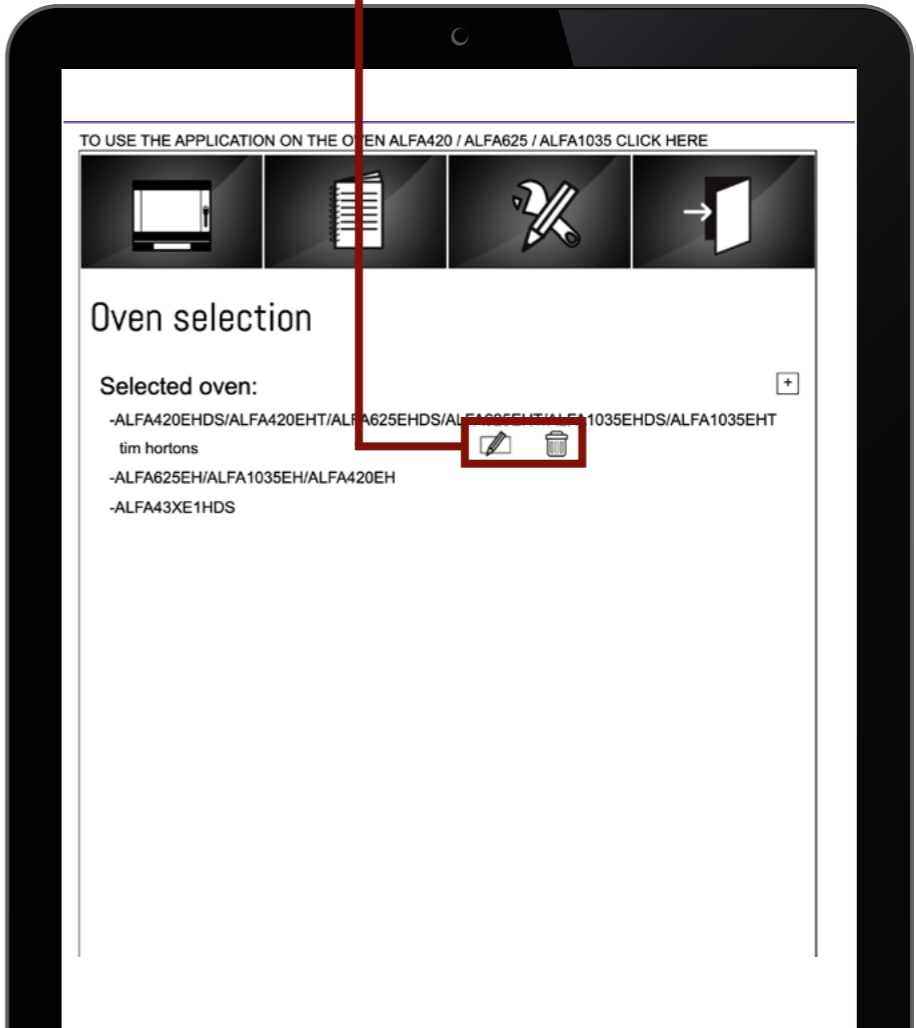
4 OVEN SELECTION

How to assign a name to an oven:

Select oven type and give a name to the oven, for example «pastry oven» and save.



Once oven's name is saved, it can be renamed or deleted by clicking on the icons.



5 PROGRAMS' BOOK

How to create and save programs:

1

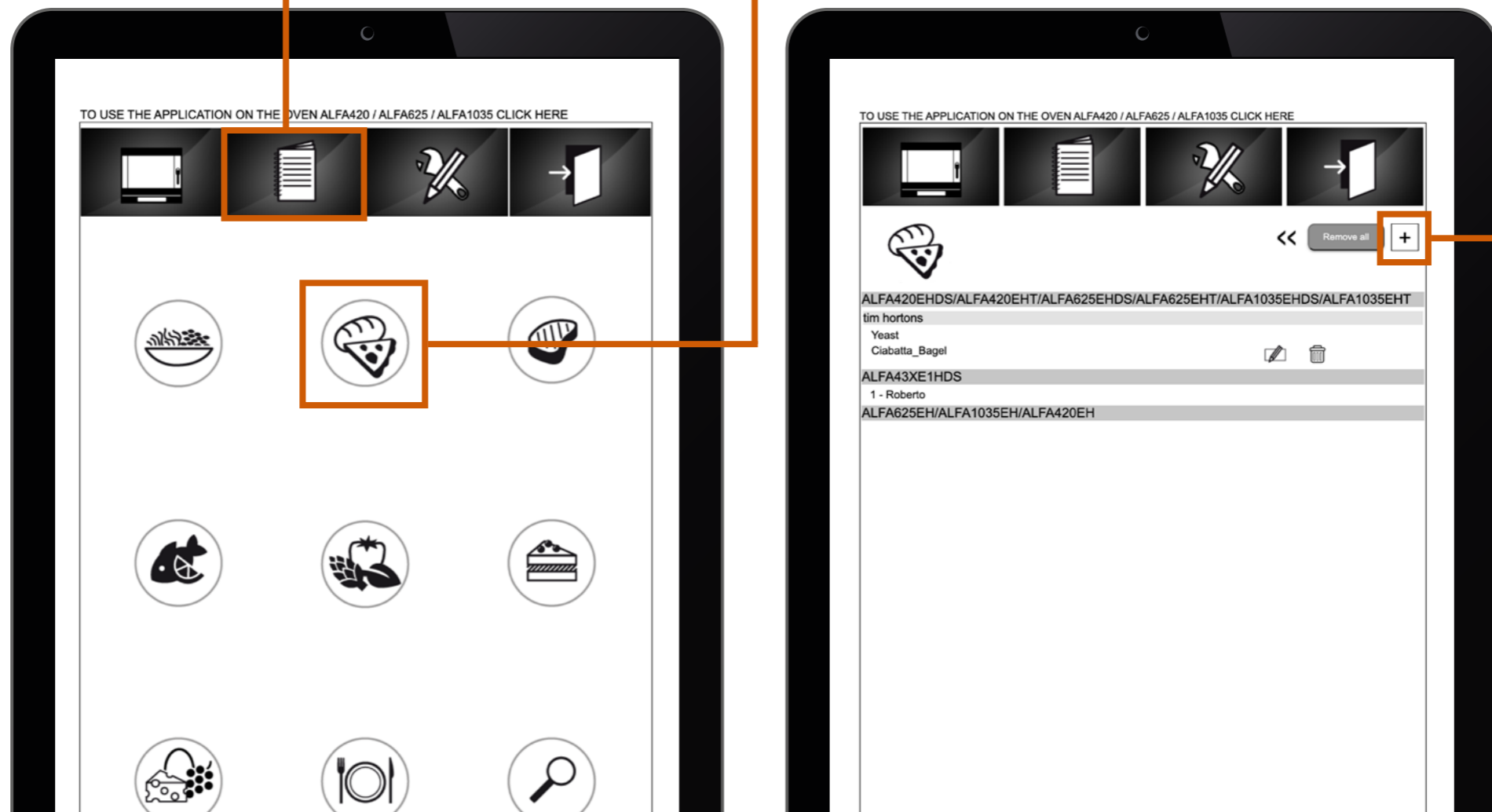
Click on the Program Book icon

2

Click the food «category» where the program will be stored

3

Click on «+» to add a program



5 PROGRAMS' BOOK

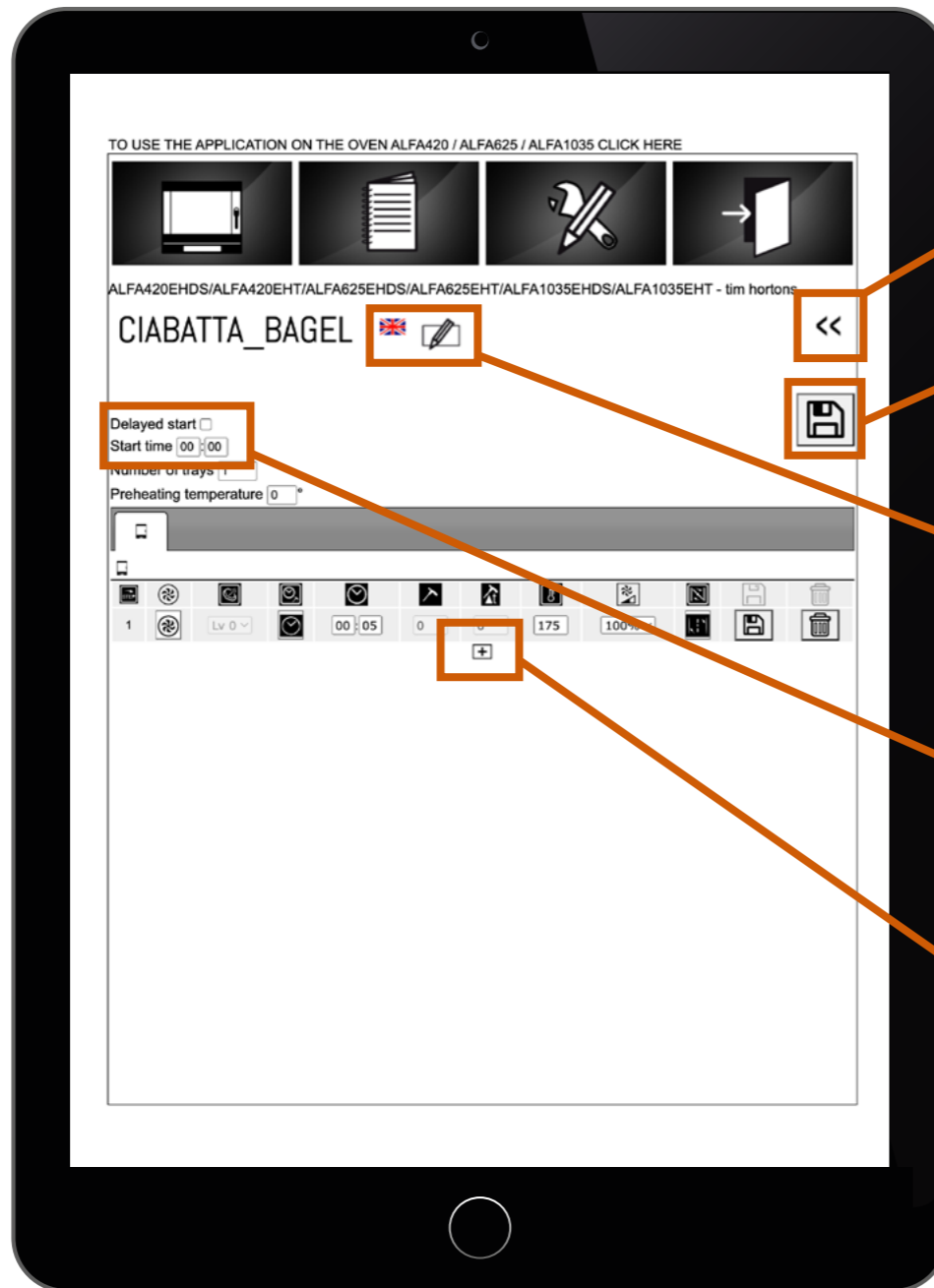
How to create and save programs:

- Select oven type and, if assigned, oven name
- Select program position if prompted
- Give a name to the program
- Select the language for the program
- Save



5 PROGRAMS' BOOK

How to set the cooking parameters:



Return to previous page

Save parameters set-up

Go back to program name / oven name / food category settings menu to edit selection

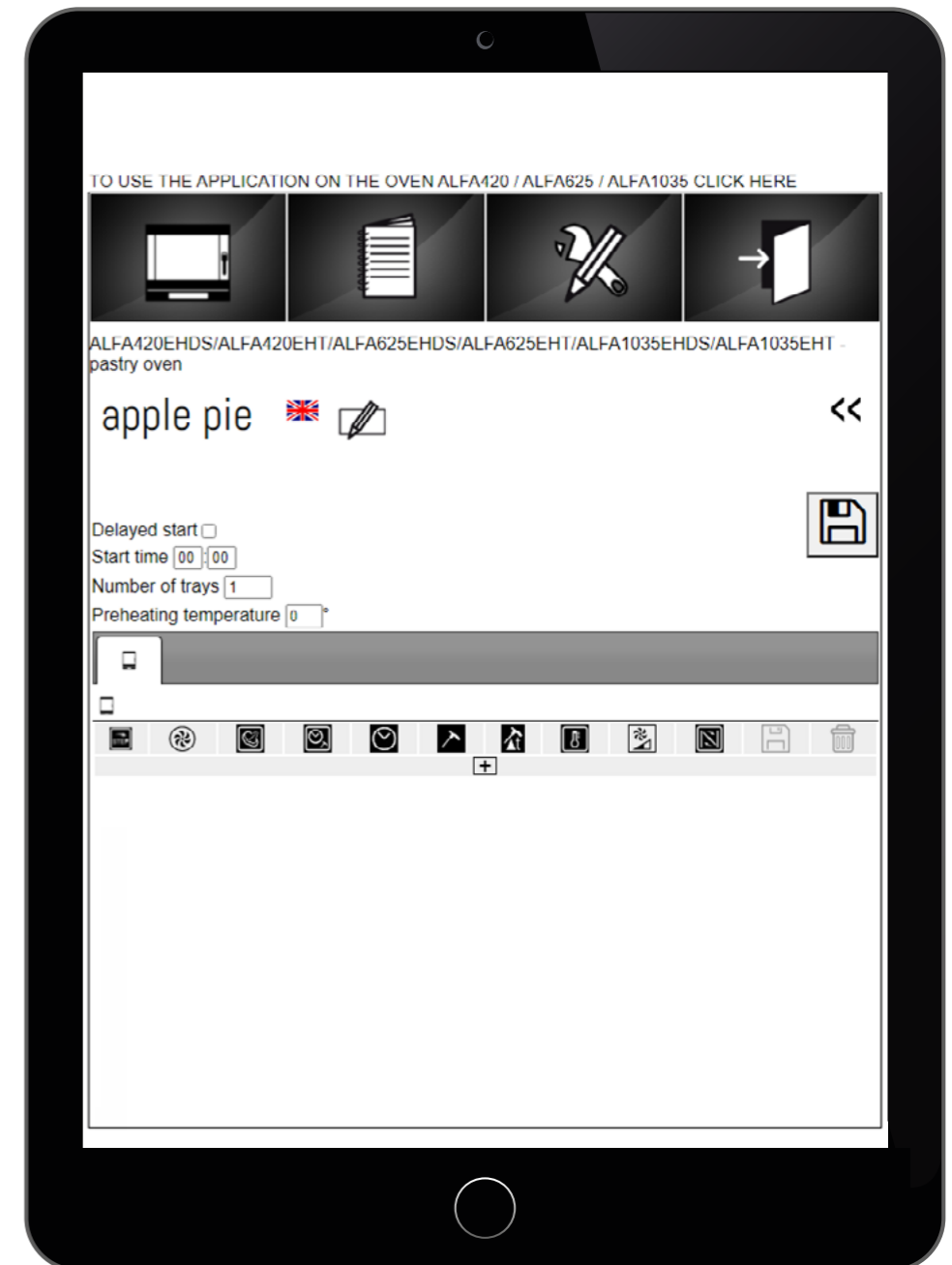
Delayed start set-up

Cooking program parameters set-up

5 PROGRAMS' BOOK

How to set the cooking parameters:

- Clicking on «+» allows entering **cooking parameters**
- Humidified cooking is only possible with fan speed on «2»
- After humidified cooking is selected, humidification level can be set
- If timed cooking is selected, core temperature probe and delta T functions will be disabled for the following cooking phases
- Once all parameters are entered, **save** the cooking phase
- Once first cooking phase is saved, **additional phases can be added** by clicking again on «+»
- Once all phases are entered, **save the program** and click on “<<” to return to previous menu



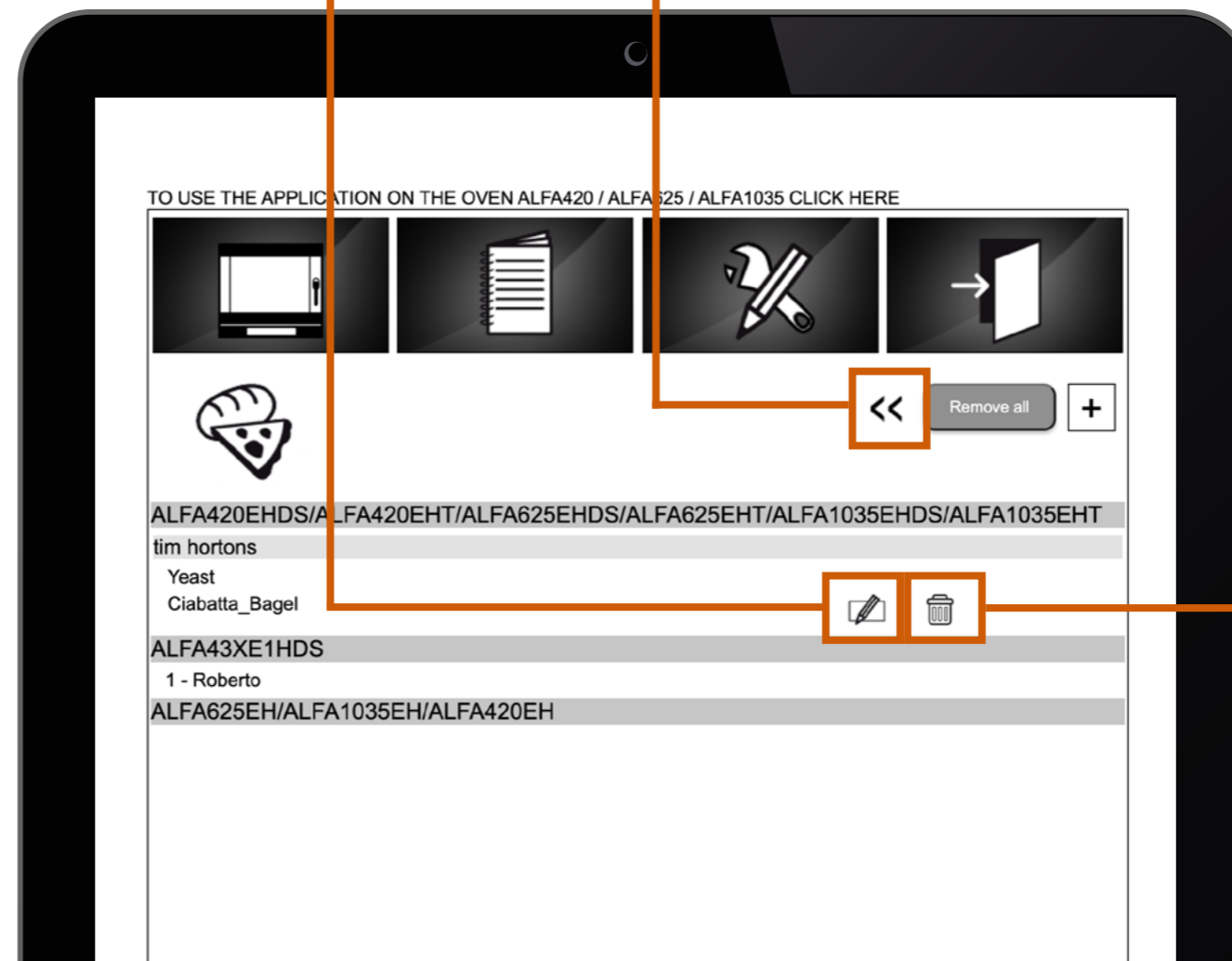
5 PROGRAMS' BOOK

How to manage the programs:

Click on Edit icon to open the program and modify cooking parameters set-up

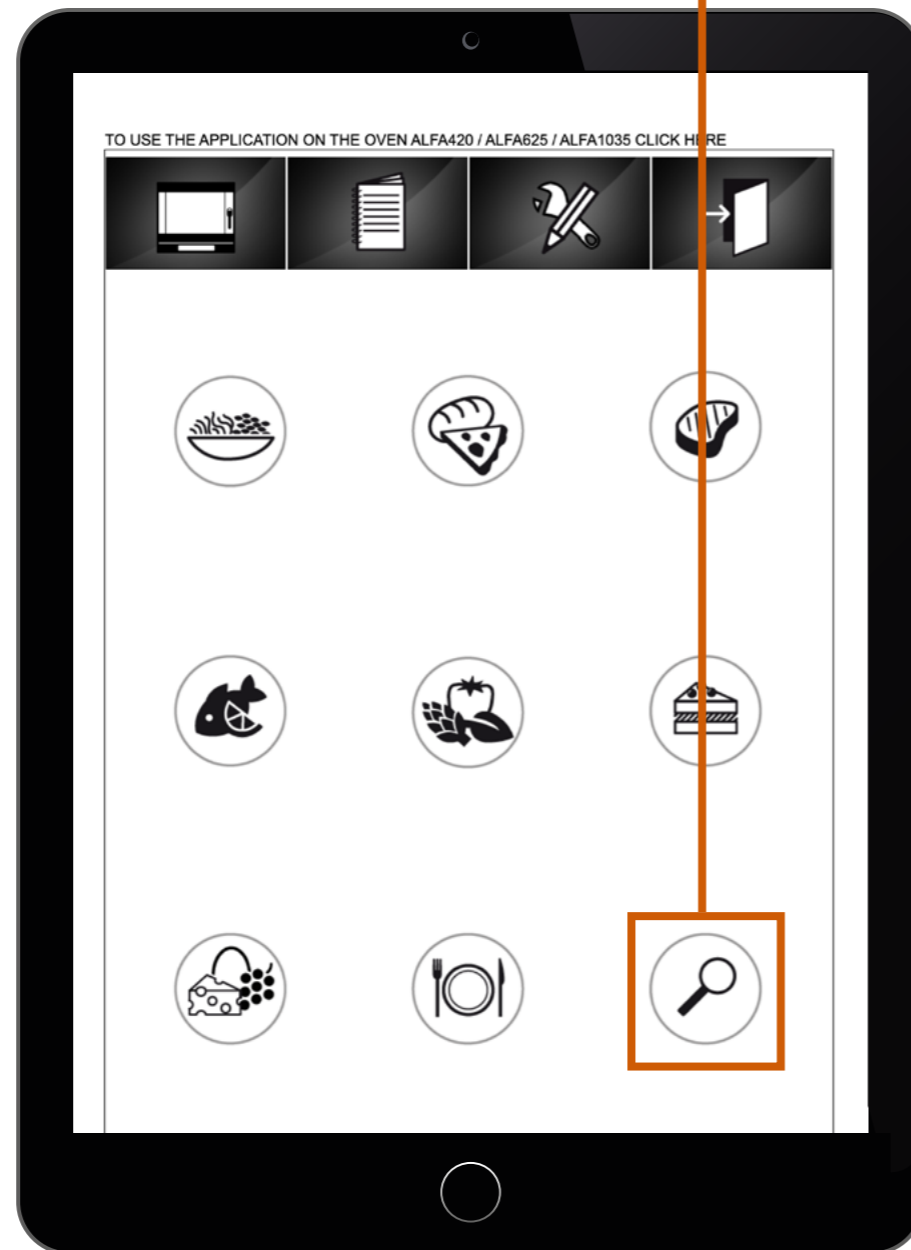
Click on "double arrow" to go to the program page

Click on Bin icon to delete the program



5 PROGRAMS' BOOK

Searching programs:



Click on Lens icon to see the list of all entered programs

Use this field to search programs by name

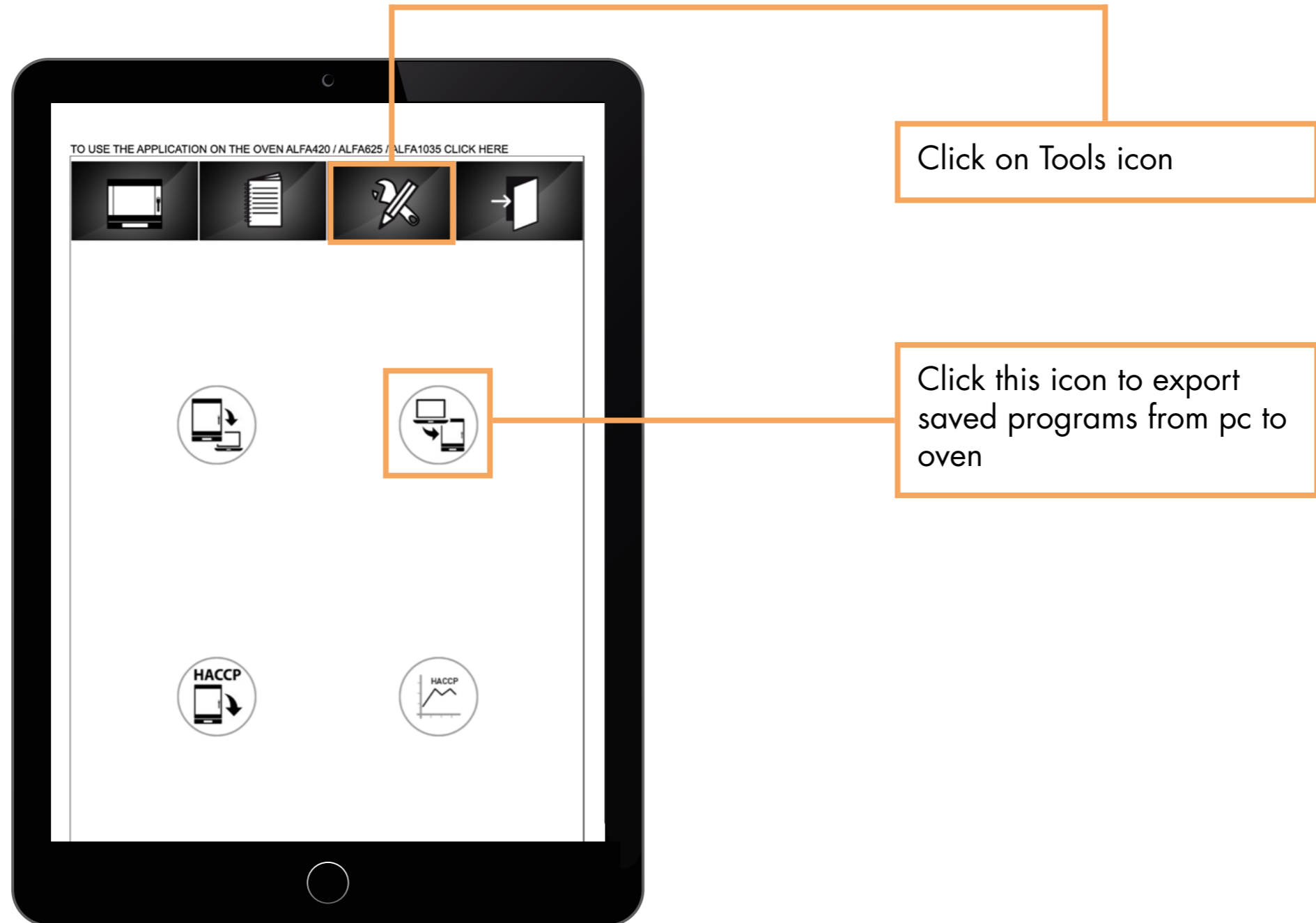
Programs already entered can be edited or deleted one by one



6

TOOLS

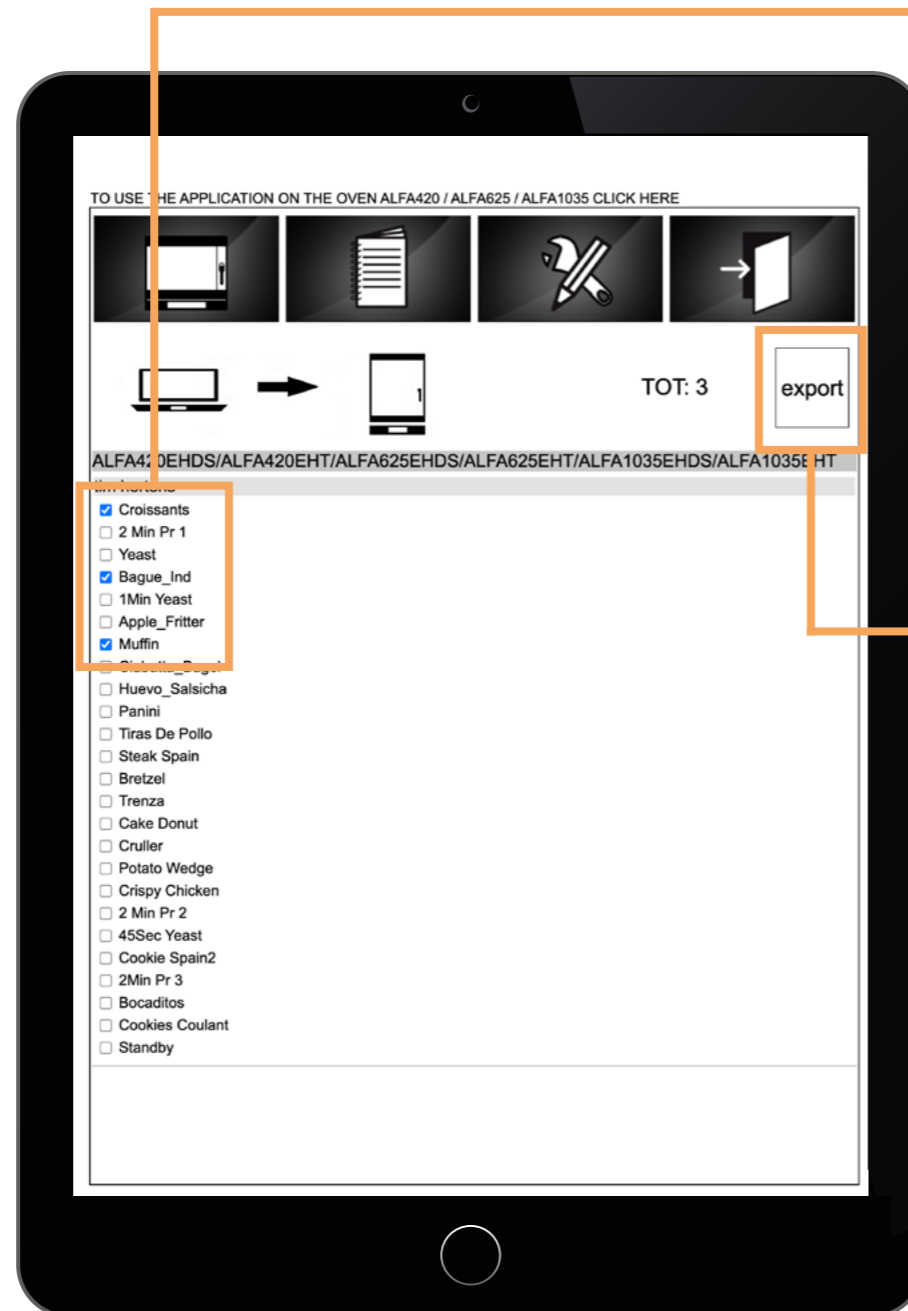
PC TO OVEN PROGRAM TRANSFER



6

TOOLS

PC TO OVEN PROGRAM TRANSFER



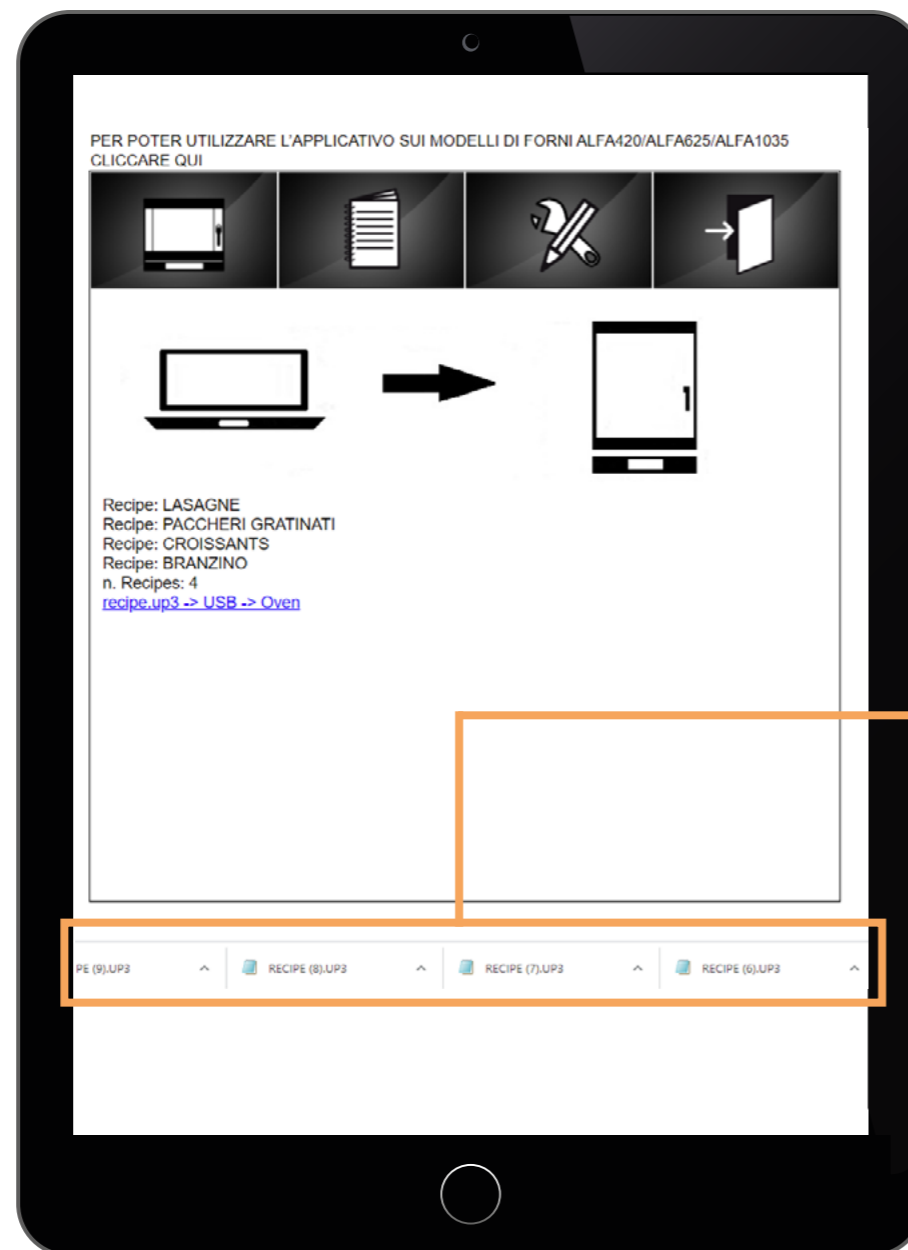
Flag the programs to be exported on usb pen

- Click on «**export**» button to start export
- Export procedure only allows to transfer programs belonging to the **same oven model**
- Repeat the procedure to transfer programs from more than one oven

6

TOOLS

PC TO OVEN PROGRAM TRANSFER



- The app creates a **file with UP extension** containing all selected programs and saves it into pc download directory
- The name of the UP file **must read exactly «RECIPE.UP3»** (in case of ALFA43) **or «RECIPE.UP2»** (for ALFA420/625/1035). **Any other name or extension won't be read by the oven.**
- The user has to transfer the file to usb pen
- If needed, the file can also be sent via e-mail



N.B. for ALFA43 users:

In case of exporting to usb pen programs with the same number as programs already stored in the oven, the software will overwrite them.



N.B. for all other models:

In case of exporting to usb pen programs with the same name as programs already stored in the oven, the software will duplicate the programs and keep the same names.

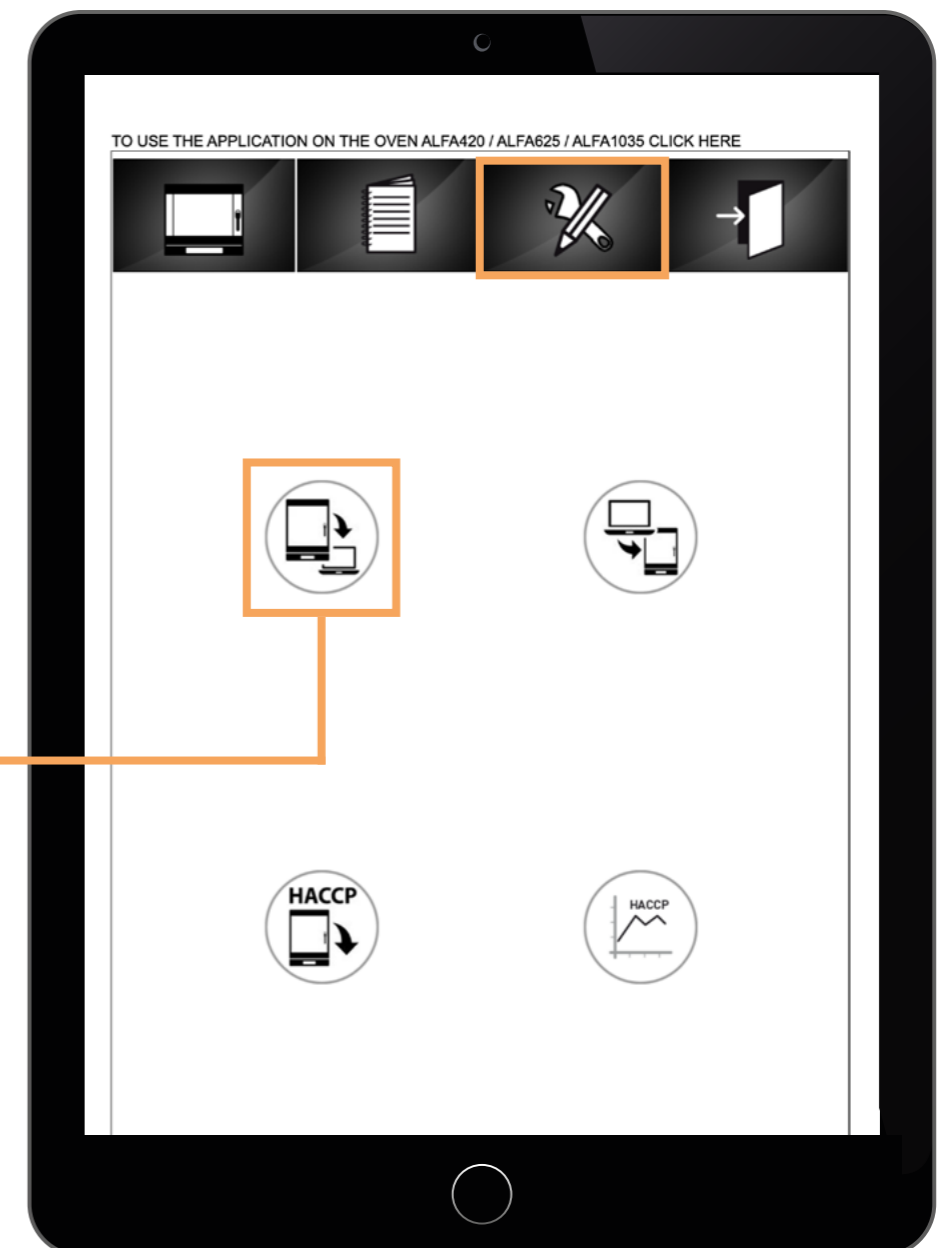
6

TOOLS

OVEN TO PC PROGRAM TRANSFER

To transfer programs from oven to usb pen please refer to oven user manual instructions

- Insert the usb pen in the oven (make sure that **the usb pen is empty**)
- **Follow oven user manual instructions**
- Once the programs have been transferred to usb pen, put it in the pc, **open the «Tools» menu of the application and follow the instructions by clicking on this icon.**



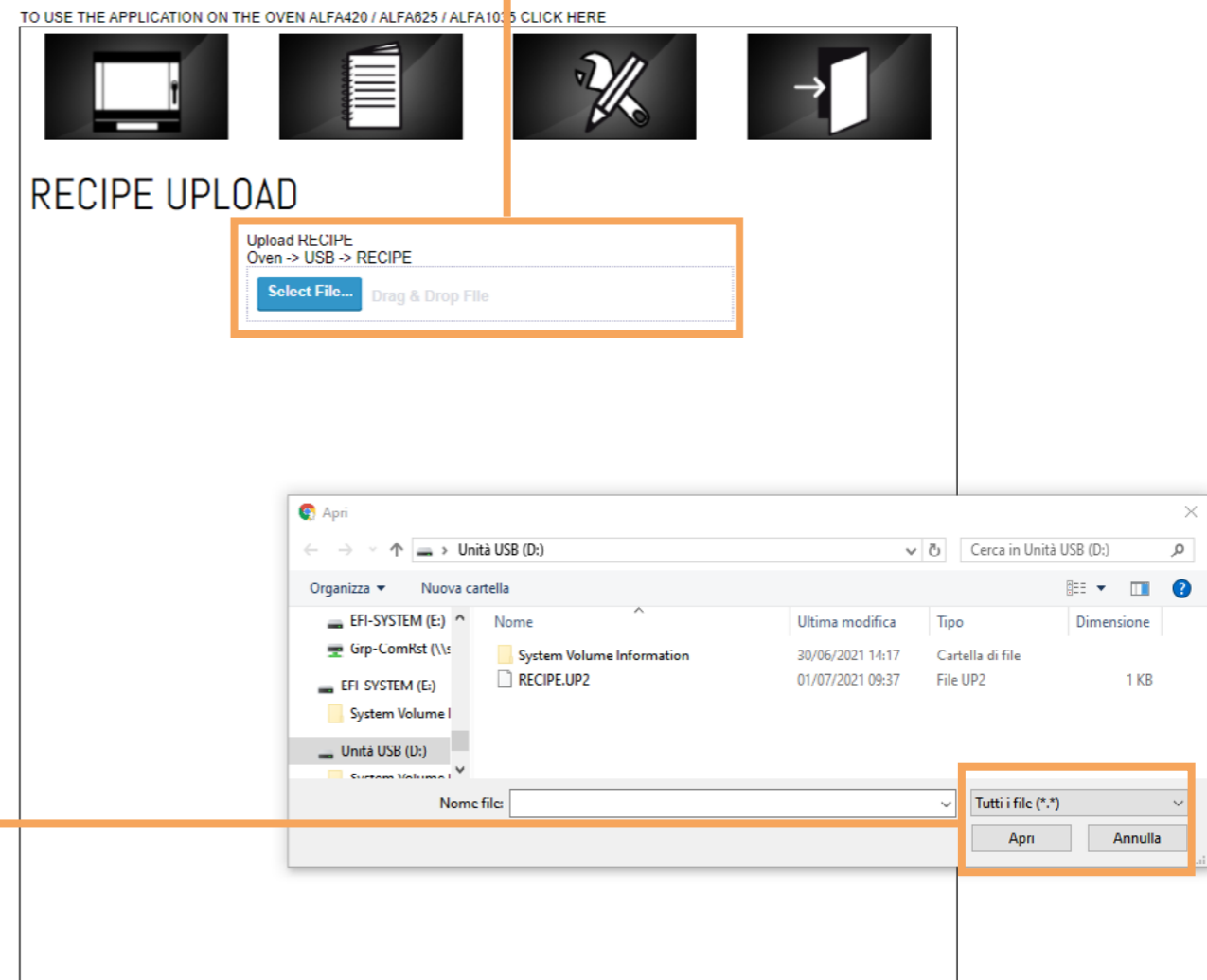
6

TOOLS

OVEN TO PC PROGRAM TRANSFER

By clicking the **Select File** button it is possible to see and select the UP files saved on the usb.

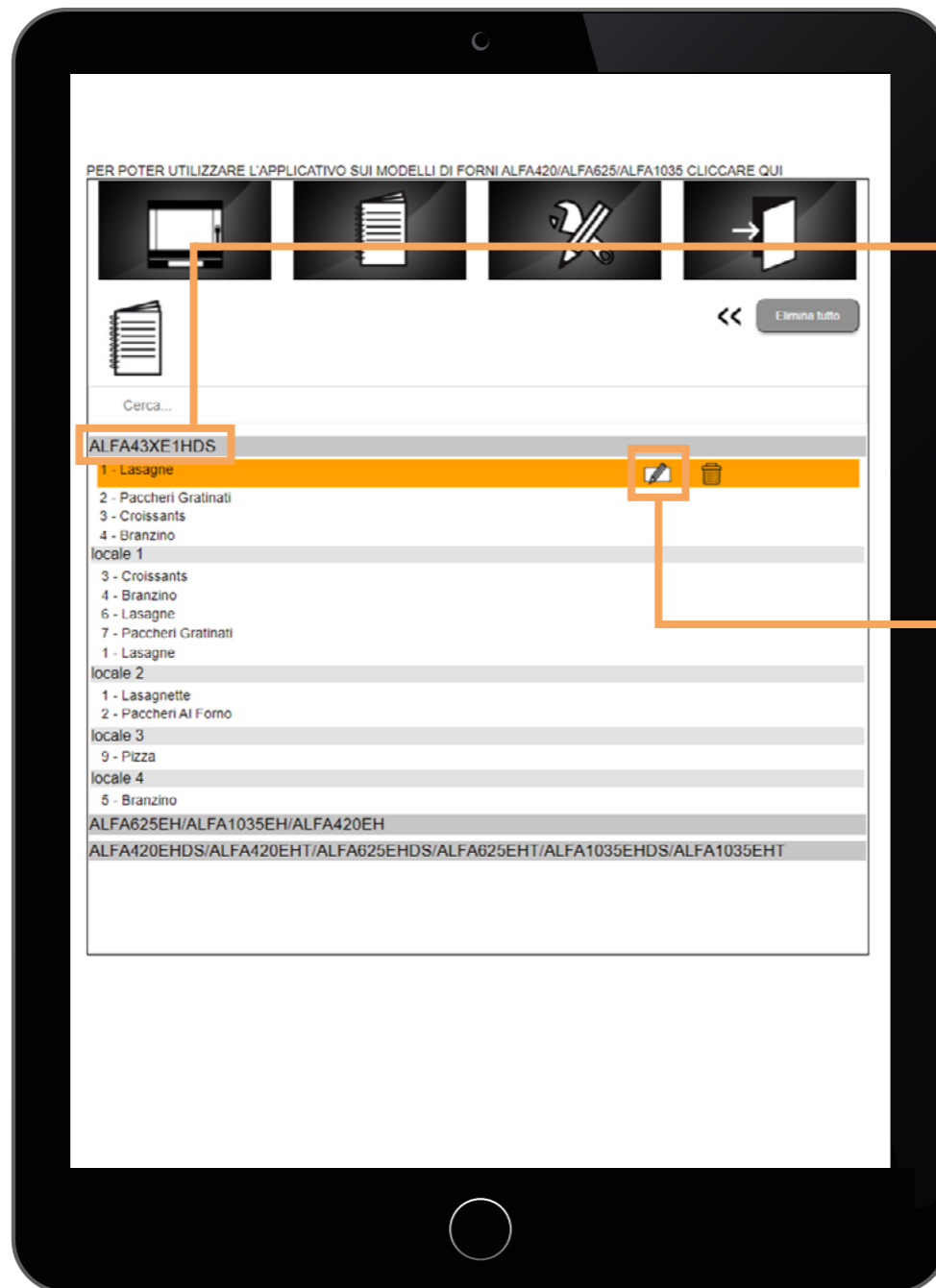
Once the file is selected click on **Open** in order to transfer it to the application.



6

TOOLS

OVEN TO PC PROGRAM TRANSFER



Programs imported from usb will be listed below the oven family outside the existing subcategories like PUB1, PUB2, PUB3

Programs can be moved to the subcategories by selecting them and clicking on the «Modify» icon



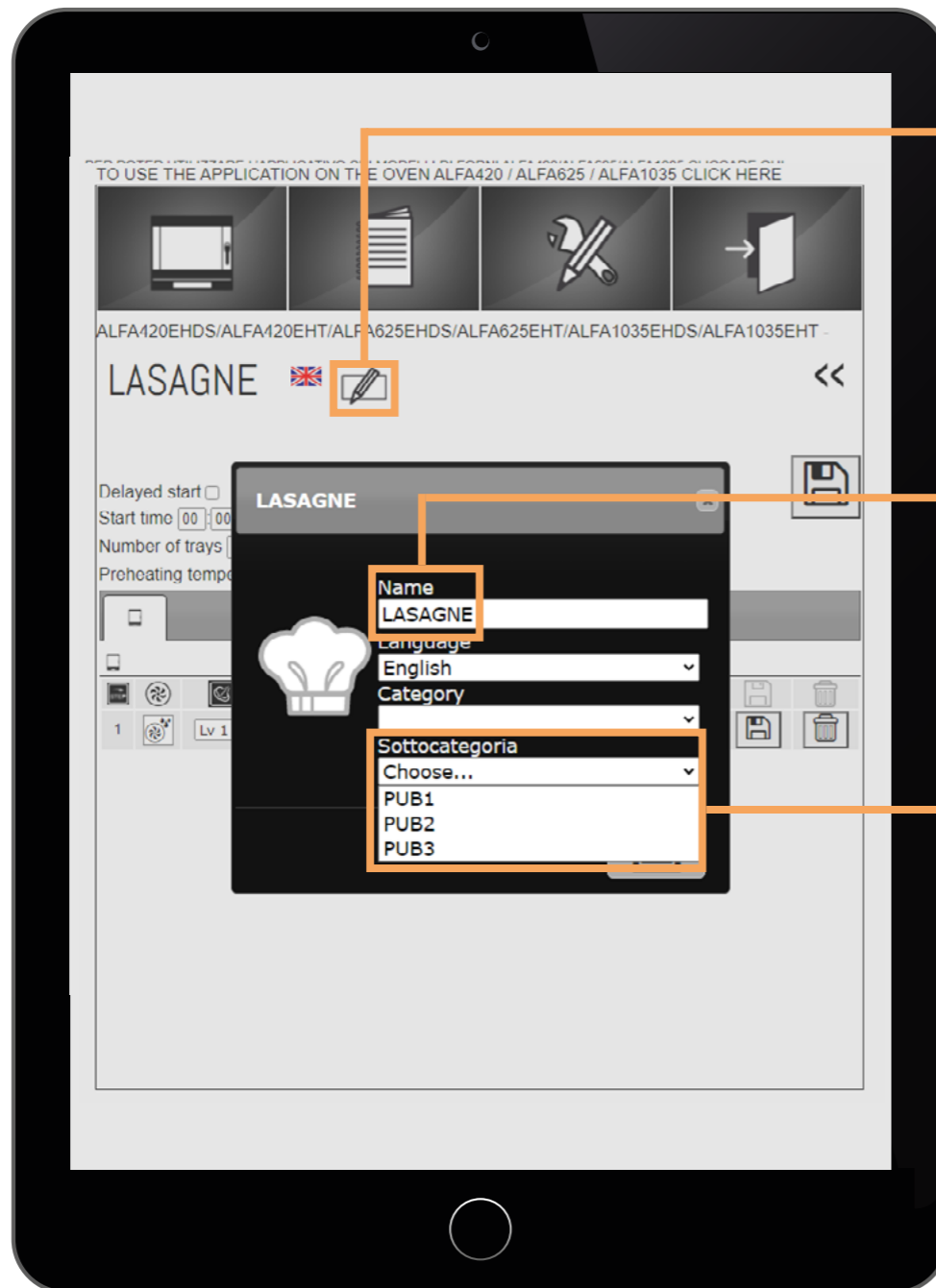
N.B.

ALFA43 programs which have been created or modified on the oven, will show the number instead of the name once transferred to the application

6

TOOLS

OVEN TO PC PROGRAM TRANSFER



By clicking on the icon «modify» it is possible to enter the menu in order to change all program parameters.

If the program position or name already exists in the subcategory, this program will replace the existing one.

Select the subcategory in which the program has to be saved.

6

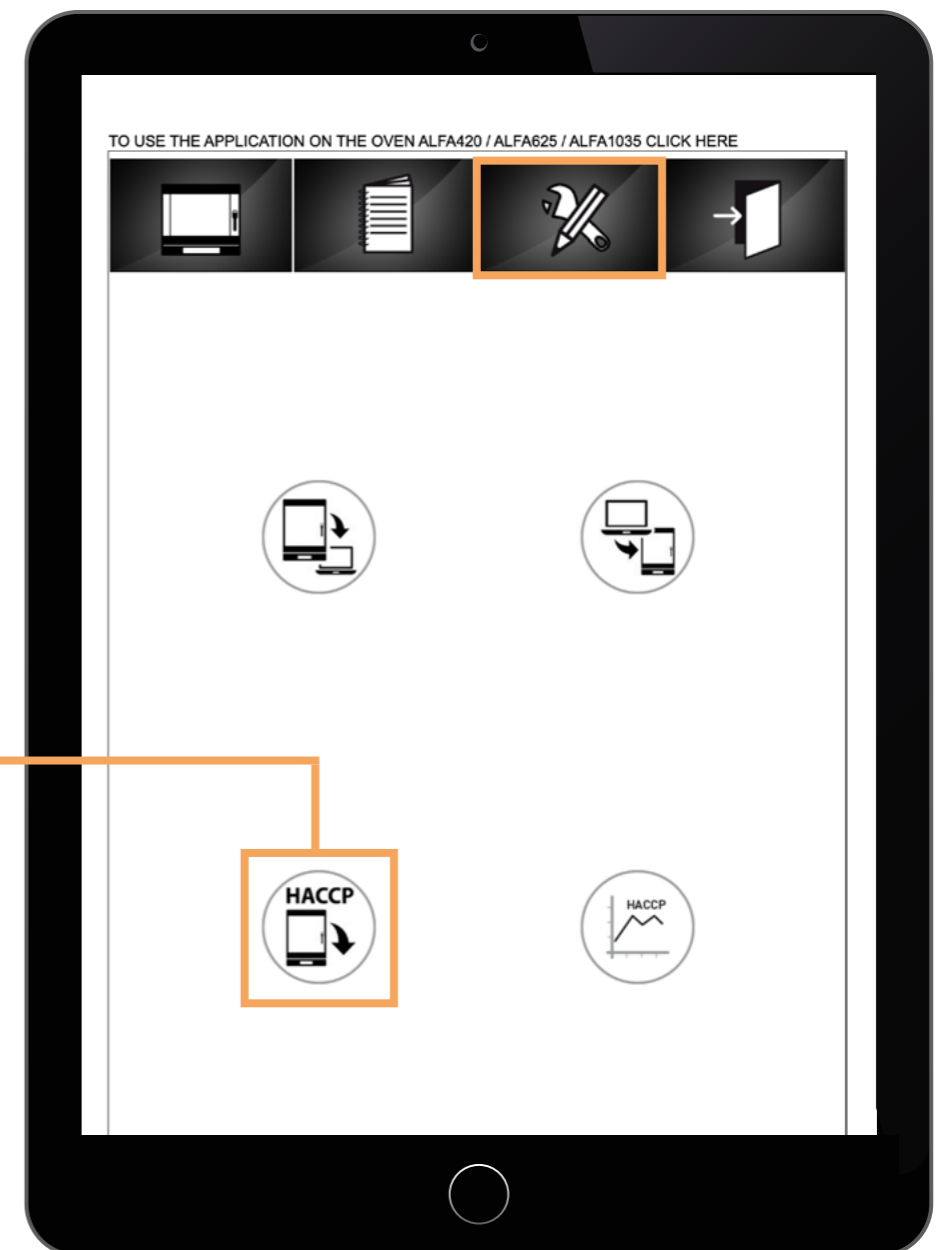
TOOLS

HACCP DATA DOWNLOAD

In order to transfer the HACCP data from oven to usb, please refer to oven user manual instructions

- Place the usb in the oven (the usb must be empty)
- Follow the user manual's instructions

Once the upload on the usb is completed, put the usb in the pc, open the «**Tools**» menu of the application and follow the instructions by clicking on **this icon.**



6

TOOLS

HACCP DATA DOWNLOAD

The **Select File** icon allows to select the UP files saved on the usb.

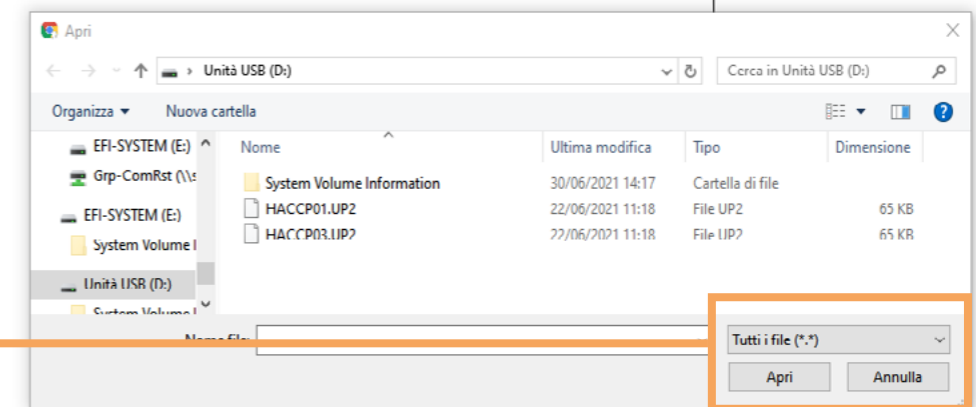
Once the file is selected, click on the icon **Open** to import it on the application.
Wait till the end of the transfer and opening of the following page.

TO USE THE APPLICATION ON THE OVEN ALFA420 / ALFA625 / ALFA 035 CLICK HERE



HACCP UPLOAD

Upload HACCP.UP2
Oven -> USB -> HACCP.UP2
[Select File...](#) [Drag & Drop File](#)



6

TOOLS

HACCP DATA DOWNLOAD

Select oven type and date



A graphic will show the working temperatures and time related to the selected period.





Smeg S.p.A.

Via Leonardo da Vinci, 4 - 42016 Guastalla (RE) Italy
tel +39 0522 82 11 fax +39 0522 82 14 53
SmegFoodservice.com foodservice@smeg.it

Servizio Post-Vendita

Tel. +39 0522 1848558 | professional.service@smeg.it