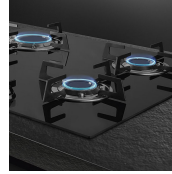


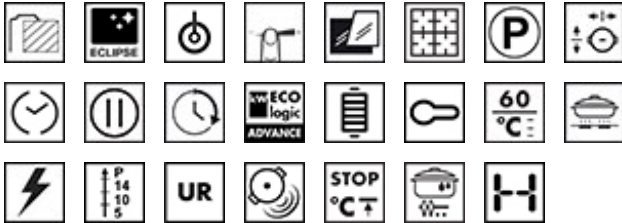
## PM3953D

Hob, Aesthetics: Classic, Mixed, 90 cm, Built-in: Ultra-low profile



### CERAMIC GLASS

Ceramic glass is able to withstand heat above 800°C so it is extremely robust and durable. Composed of a single glass plate measuring only 4 to 8mm, this type of glass is resistant to impact and wear.



### TYPE

Product Family: Hob • Dimensions: 90 cm • Type: Mixed • Built-in: Ultra-low profile • Power supply: Mixed • EAN code:

8017709290221

### AESTHETICS

Colour: Black • Finishing: Glass • Aesthetics: Classic • Material: Glass • Glass Type: Eclipse ceramic • Controls colour: Steel effect • Type of control setting: Control knobs • Control knobs position: Front • No. of controls: 1 • Slider: Yes • Glass edge: Straight edge • Glass on Steel: Yes • Pan stands: Cast iron • Burners: Smeg Contemporary • Burners Material: Brass • Serigraphy colour: Grey

### PROGRAMME / FUNCTIONS

Total no. of cook zones: 5 • No. of gas cook zones: 1 • No. of induction cook zones: 4 • Time-setting options: Automatic switch-off • No. of cooking zones with booster: 4 • No. of Flexible zones: 2 • Main on/off switch: Yes • Power levels: 9

## OPTIONS

Standard cut out: 482-486x839-844 mm • Multizone Option: Yes • Flexible Zone Type: MultiZone • End cooking timer: 4 • Pause option: Yes • Minute minder: 1 • End of cooking acoustic alarm: Yes • Residual time indicator: Yes • Limited Power Consumption Mode: Yes advance • Limited Power Consumption Mode in W: 2400 a 7400 - step 100 W • Show Room Demo Option: Yes • Grill function: Yes • Control Lock / Child Safety: Yes • Keep warm automatic function: Yes • Bridge option: Yes • Quick start: Yes • Rapid level selection: Yes

## COOKING ZONES

1st zone position: Centre left • 2nd zone position: Rear centre • 3rd zone position: Front centre • 4th zone position: Rear right • 5th zone position: Front right • 1st zone type: Gas - UR • 2nd zone type: Induction - multizone • 3rd zone type: Induction - Multizone • 4th zone type: Induction - multizone • 5th zone type: Induction - Multizone • 2nd zone dimensions: 24.0x18.0 cm • 3rd zone dimensions: 24.0x18.0 cm • 4th zone dimensions: 24.0x18.0 cm • 5th zone dimensions: 24.0x18.0 cm • Central Multizone dimension: 38.5x23.0 cm • Right Multizone dimension: 38.5x23.0 cm • 1st zone power: 6.00 kW • 2nd zone power: 2.10 kW • 3rd zone power: 2.10 kW • 4th zone power: 2.10 kW • 5th zone power: 2.10 kW • Power double booster 2° zone: 3.00 kW • Power double booster 3° zone: 3.00 kW • Power double booster 4° zone: 3.00 kW • Power double booster 5° zone: 3.00 kW • 2nd zone booster power: 2.50 kW • 3rd zone booster power: 2.50 kW • 4th zone booster power: 2.50 kW • 5th zone booster power: 2.50 kW • Booster power central Multizone: 3.60 kW • Booster power right Multizone: 3.60 kW

## TECHNICAL FEATURES

Gas Type: G20 Natural gas • Automatic setting according to pan dimension: Yes • Permanent Automatic Pot Detection with indication of the relative control: Yes • Automatic pan detection: Yes • Gas safety valves: Yes • Automatic Ignition: Yes • Automatic switch off when overheat: Yes • Automatic switch off when overflow: Yes • Residual heat indicator: Yes • Protection against accidental start up: Yes

## PERFORMANCE / ENERGY LABEL

2nd zone energy consumption: 198 Wh/Kg • Energy consumption zone 3: 191 Wh/Kg • Energy consumption zone 4: 191 Wh/Kg • Energy consumption zone 5: 195 Wh/Kg

## ELECTRICAL CONNECTION

Gas connection rating (W): 5900 W • Nominal power (W): 7400 W • Voltage (V): 220-240 V • Voltage 2 (V): 380-415 V • Frequency (Hz): 50/60 Hz • Type of electric cable: Single and Double phase • Power supply cable length: 120 cm

## LOGISTIC INFORMATION

Dimensions of the product (mm): 45x900x510 • Depth (mm): 510 mm • Width (mm): 900 mm • Product Height (mm): 45 mm

## ACCESSORIES INCLUDED

Cast iron wok support: 1 Other gas nozzles included: G30 GPL Liquid gas Other gas connections provided: Conical

---

**OPTIONAL**

LGCN: Connecting strip, Hobs

