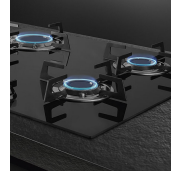


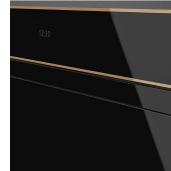
## PM6621WLDR

Hob, Aesthetics: Dolce Stil Novo, Mixed, 65 cm, Built-in: Traditional



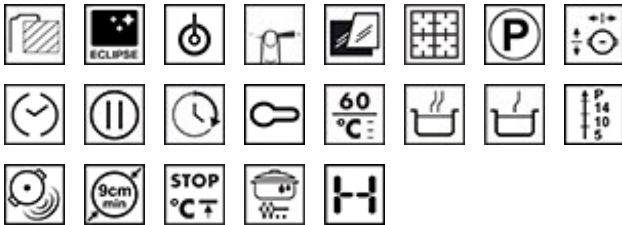
### CERAMIC GLASS

Ceramic glass is able to withstand heat above 800°C so it is extremely robust and durable. Composed of a single glass plate measuring only 4 to 8mm, this type of glass is resistant to impact and wear.



### NATURAL MATERIALS

Like many natural materials, slight imperfections in metals are to be expected, along with natural discolouration of these materials over time through useage and exposure to sunlight.



### TYPE

Product Family: Hob • Dimensions: 65 cm • Type: Mixed • Built-in: Traditional • Power supply: Mixed • EAN code: 8017709230456

### AESTHETICS

Colour: Black • Finishing: Glass • Aesthetics: Dolce Stil Novo • Components finishing: Copper • Material: Glass • Glass Type: Eclipse ceramic • Controls colour: Black • Type of control setting: Control knobs • Control knobs position: Front • No. of controls: 2 • Slider: Yes • Glass edge: Straight edge • Glass on Steel: Yes • Pan stands: Cast iron • Burners: Smeg Contemporary • Burners Material: Alluminium • Burner Coating: Black Ceram • Serigraphy colour: Grey

### PROGRAMME / FUNCTIONS

Total no. of cook zones: 4 • No. of gas cook zones: 2 • No. of induction cook zones: 2 • No. of cooking zones with booster: 2 • No. of Flexible zones: 1 • Main on/off switch: Yes • Power levels: 9

## OPTIONS

Standard cut out: 482-486x555-560 mm • Multizone Option: Yes • Flexible Zone Type: MultiZone • End cooking timer: 2 • Pause option: Yes • Minute minder: 1 • End of cooking acoustic alarm: Yes • Residual time indicator: Yes • Show Room Demo Option: Yes • Control Lock / Child Safety: Yes • Keep warm automatic function: Yes • Simmering Function: Yes • Melting/Low temperature cooking function: Yes • Rapid level selection: Yes

## COOKING ZONES

1st zone position: Front left • 2nd zone position: Rear left • 3rd zone position: Rear right • 4th zone position: Front right • 1st zone type: Gas - AUX • 2nd zone type: Gas - Rapid • 3rd zone type: Induction - Multizone • 4th zone type: Induction - multizone • 3rd zone dimensions: 18.0x23.0 cm • 4th zone dimensions: 18.0x23.0 cm • Right Multizone dimension: 38.5x23.0 cm • 1st zone power: 1.10 kW • 2nd zone power: 3.10 kW • 3rd zone power: 2.10 kW • 4th zone power: 2.10 kW • 3rd zone booster power: 3.60 kW • 4th zone booster power: 3.60 kW • Booster power right Multizone: 3.60 kW

## TECHNICAL FEATURES

Gas Type: G20/G25 natural gas • Automatic setting according to pan dimension: Yes • Permanent Automatic Pot Detection with indication of the relative control: Yes • Automatic pan detection: Yes, min 9 cm • Gas safety valves: Yes • Automatic Ignition: Yes • Automatic switch off when overheat: Yes • Automatic switch off when overflow: Yes • Residual heat indicator: Yes • Protection against accidental start up: Yes

## PERFORMANCE / ENERGY LABEL

Energy consumption zone 3: 195 Wh/Kg • Energy consumption zone 4: 195 Wh/Kg

## ELECTRICAL CONNECTION

Gas connection rating (W): 4200 W • Nominal power (W): 3700 W • Voltage (V): 220-240 V • Frequency (Hz): 50/60 Hz • Type of electric cable: Single phase • Power supply cable length: 120 cm

## ALSO AVAILABLE

## LOGISTIC INFORMATION

Dimensions of the product (mm): 45x650x510 • Depth (mm): 510 mm • Width (mm): 650 mm • Product Height (mm): 45 mm

## ACCESSORIES INCLUDED

Other gas nozzles included: G30 GPL Liquid gas Other gas connections provided: Conical

## OPTIONAL

WOKGHU: Wok support, Cookers, Hobs LGCN: Connecting strip, Hobs

