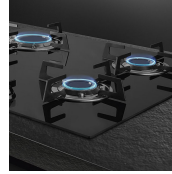


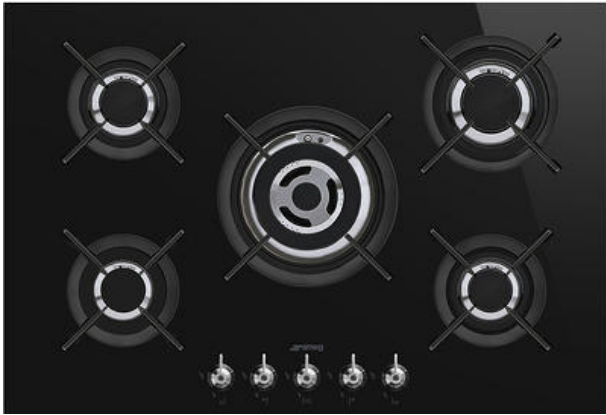
## PV375CN

Hob, Aesthetics: Classic, Gas, 70/75 cm, Built-in: Ultra-low profile or Fully Flushed



### CERAMIC GLASS

Ceramic glass is able to withstand heat above 800°C so it is extremely robust and durable. Composed of a single glass plate measuring only 4 to 8mm, this type of glass is resistant to impact and wear.



### TYPE

Product Family: Hob • Dimensions: 70/75 cm • Type: Gas • Built-in: Ultra-low profile or Fully Flushed • Power supply: Gas • EAN code: 8017709233785

### AESTHETICS

Colour: Black • Finishing: Glass • Aesthetics: Classic • Material: Glass • Glass Type: Ceramic • Controls colour: Steel effect • Type of control setting: Control knobs • Control knobs position: Front • No. of controls: 5 • Glass edge: Straight edge • Glass on Steel: Yes • Pan stands: Cast iron • Burners: Smeg Contemporary • Burners Material: Brass • Burner Coating: Nickel • Serigraphy colour: Grey

### PROGRAMS / FUNCTIONS

Total no. of cook zones: 5 • No. of gas cook zones: 5

### OPTIONS

Standard cut out: 482-486x560-564 mm

## COOKING ZONES

1st zone position: Front left • 2nd zone position: Rear left • 3rd zone position: Central • 4th zone position: Rear right • 5th zone position: Front right • 1st zone type: Gas - AUX • 2nd zone type: Gas - Semi Rapid • 3rd zone type: Gas - UR • 4th zone type: Gas - Rapid • 5th zone type: Gas - AUX • 1st zone power: 1.10 kW • 2nd zone power: 1.70 kW • 3rd zone power: 4.20 kW • 4th zone power: 2.60 kW • 5th zone power: 1.10 kW

## TECHNICAL FEATURES

Gas Type: G20/G25 natural gas • Gas safety valves: Yes • Automatic Ignition: Yes

## PERFORMANCE / ENERGY LABEL

## ELECTRICAL CONNECTION

Gas connection rating (W): 10500 W • Nominal power (W): 1 W • Voltage (V): 220-240 V • Frequency (Hz): 50/60 Hz • Type of electric cable: Single phase • Power supply cable length: 120 cm

## ALSO AVAILABLE

## LOGISTIC INFORMATION

Dimensions of the product (mm): 48x750x510 • Depth (mm): 510 mm • Width (mm): 750 mm • Product Height (mm): 48 mm • Net weight (kg): 17.400 kg • Gross weight (kg): 20.800 kg

## ACCESSORIES INCLUDED

Cast iron wok support: 1 Other gas nozzles included: G30 GPL Liquid gas Other gas connections provided: Conical

## OPTIONAL

WOKGHU: Wok support, Cookers, Hobs 5MP1GOG: Knob sets, Hobs LGCN: Connecting strip, Hobs

